



---

# Managing Public Safety with a Risk Based Approach

K W Ho

Director of Electrical and Mechanical Services  
The Government of the HKSAR



# Challenges To Regulators

---

- Rising aspirations and expectations for delivery of public services
- Less regulation without compromising safety
- Effective and efficient services
- Technology advancing at an increasingly fast pace
- Limited resources



# Traditional Approach to Safety Regulation

---

- Requirements largely based on deterministic analysis
- Addressing:  
What can go wrong?; and  
What are the consequences?
- Enforcement actions to manage compliance



# Risk Based Approach

---

- Considerations of risks in formulation of requirements
- Addressing also:  
How likely is it that something will go wrong and how severe the consequence will be?
- Regulatory actions to take risks into account

# Adopting Risk Based Approach



PLAN



REVIEW

CONSULT



IMPLEMENT

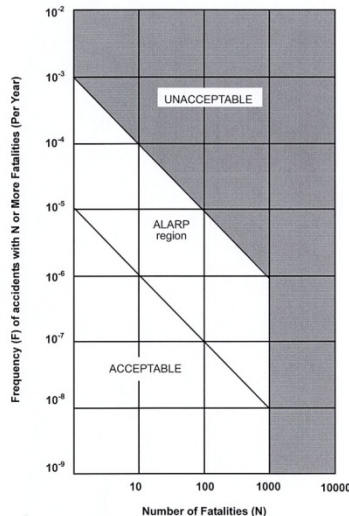


# Plan

- Identify the risks to public safety
- Select appropriate initiatives to control the risks

*Third party certification for inspection of LPG installations*

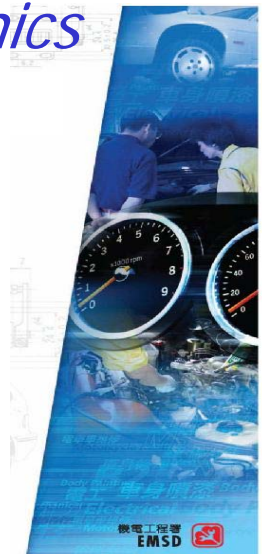
*Railway sector*



# Consult

- Consult stakeholders on the selected risk management initiative

## *Voluntary Registration Scheme for Vehicle Mechanics*

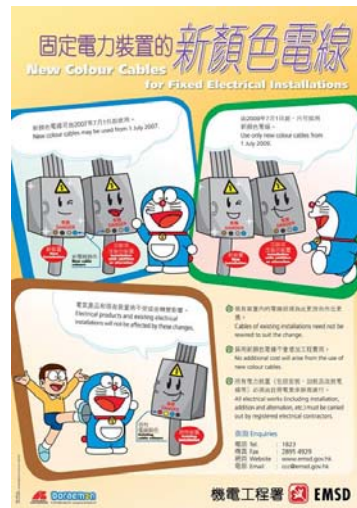


# Implement

- Communicate and implement the selected risk management initiative

## *New Cable Colour Code Scheme*

| New Cable Colour Code for Fixed Electrical Installations |       |  |                          |                                |  |
|--|-------|--|--------------------------|--------------------------------|--|
| Old colour cables  |       | New colour cables  |                          |                                |  |
| Red  | Black | Brown  | Blue                     |                                |  |
| Yellow   | Black | Brown  | Blue                     |                                |  |
| Blue   | Black | Brown  | Blue                     |                                |  |
| Black  | Black | Brown  | Blue                     |                                |  |
|  |       | L  | N                        |                                |  |
|  |       | L  | N                        |                                |  |
|  |       | L  | N                        |                                |  |
|  |       | L  | N                        |                                |  |
|  |       | L  | N                        |                                |  |
| Single-phase Installation                                |       |  | Three-phase Installation |                                |  |
| Old colour cables must be used                           |       | Old or new colour cables can be used                           |                          | New colour cables must be used |  |
| 1.7.2007   |       | 1.7.2009   |                          |                                |  |
| Hotline : 1823   |       | Email : <a href="mailto:ccc@emsd.gov.hk">ccc@emsd.gov.hk</a>   |                          | 機電工程署 EMSD                     |  |
| Fax : 2895 4929  |       | Website : <a href="http://www.emsd.gov.hk">www.emsd.gov.hk</a> |                          |                                |  |





# Review

- Monitor and review the safety outcome and the service delivery process

## *E&M Safety Public Awareness Survey*

## *Licensing Review*



**EMSD** 

**nielsen**

|                 |                 |                  |           |
|-----------------|-----------------|------------------|-----------|
| Study ID        | 70815 (101-105) | Resp. No.        | (108-109) |
| Interviewer No. | (113-117)       | Interview Length | (118-119) |
| No. Of Queries  | (120-121)       | Reference No.    | (122-126) |

Name of respondent: \_\_\_\_\_

Respondent's Contact no.: \_\_\_\_\_

Interviewer no.: \_\_\_\_\_

Date of interview: \_\_\_\_\_

Time began: \_\_\_\_\_

Time ended: \_\_\_\_\_

請問您電話號碼係唔係 \_\_\_\_\_ ?

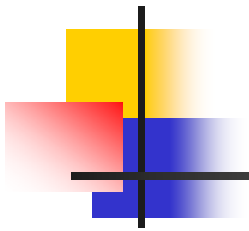
你好，我姓 係 AC 尼爾森電器訪問員，我哋係各都唔同產品服務嘅研究，希望同你繼續訪問，多謝你嘅合作。

因為我哋要係你嘅金鐘一位成員出專業訪問，首先請問你嘅金有冇家庭成員係 10 至 64 歲而一星期平均有五晚唔睡住嘅呢？

**N070615 E&M Safety Public Awareness Survey on Electrical Safety => Jodie Chan**  
 N(Mam)=1,000 (aged 15-54) , N(booster)=60 (aged 10-14) & 100 (aged 55-64)  
 問所有 10- 64 歲嘅人

**儀器安全方面**

| Q49 | 應知有人                           | Code (127) | Route |
|-----|--------------------------------|------------|-------|
|     | 你知道唔知道 GU 標誌呢？呢個標誌會唔係儀器嘅工具上擺到。 |            |       |
|     | 知道                             | 1          |       |
|     | 唔知道                            | 2          |       |



# Conclusions

